



 **nms**
NEW MODEL SCHOOL

ANNUAL REPORT 2014 - 2015



"Small class sizes and a real village school atmosphere. The standard of teaching is exceptional with staff completely dedicated to the children's educational development as well as ensuring they are happy and confident individuals..."

Faraday parent.





David Jones,
Chairman of NMS

Introduction

At the core of what we do is an excellent education, backed by our Core Knowledge curriculum and set within a broadly Christian ethos. For us, this means high standards in literacy and numeracy, which enable a child to progress confidently to their next school.

We also encourage each child to achieve their personal best across a wide range of subjects, including sport, drama, music and art.

Great thanks go to teachers, staff, parents and volunteers for their hard work with us. We educate around 300 children at close to the lowest fee level of any independent school near our east and west London catchment areas - and at less than half the cost of many. Low fees and high standards are good for families.

However, this also means that any bursary donations are very effectively spent and allow us to give an excellent education to as many children as possible.

This report will give you further details.





Peter Meyer
Chief Executive Officer

A Review of the Year 2014-2015

In my second year in office as Chief Executive Officer I can report on another successful year.

We increased our pupil numbers and we continued to provide education at a low cost to ourselves and to our parents. We raised fees in 2014-15 (and again in 2015-16) by a little more than average; but, as this largely reflected the cost pressures the sector faces, our fees remain amongst the very lowest in London.

Despite our low costs we relish being considered amongst the best school-providers in London. We believe that to achieve what is best for our children and our parents, we have to keep aiming higher and higher. Each year we set internal targets for achieving excellence and we constantly invest in people and resources to help us achieve that purpose.

Last year we refined and improved our Core Knowledge based teaching by acquiring more resources and by sharing ideas and experience across classes and schools. We also sought to encourage other subjects such as art, gymnastics, drama and sports, both in classes in the day and after school. It is this which, taken together with our interest in history, culture and contextuality, constitutes what we like to call 'Excellence Plus'.

We have now had four years of transfers into secondary education at Maple Walk, and in 2014-15 we were able to build further on experience to the benefit of our children. Individuals and teams have achieved success in non-academic subjects also, in the form of awards in competitions and scholarships to secondary level.

We remain focused on compliance, even as the pace of change directed by Government has quickened, and the net has widened to cover more aspects of life both within school and outside. It is perhaps no surprise that each school now has thirty-two individually customized and approved policies, brought entirely up to date with best practice, government guidance or new laws over the summer of 2015.

We continued to remain profitable in 2014-15, though at a slightly lower level, for reasons set out in the Financial Review. I confidently expect further years of surpluses as we finish building the platform for long-term sustainability which we started last year.

Our staff are key, and I would like thank them, but I would also like to thank our parents, and each school's Friends organisations, who have helped our children achieve goals and enjoy their school days.

Highlights:

- Increased pupil numbers
- Our Core Knowledge Curriculum fully embedded
- Best-ever transfer into secondary education
- Another year in surplus



Highlights:

- Surplus of £63k
- More surpluses expected in the future
- New classes added to both schools
- New additions to the school estates
- Significant new spend on technology in September 2015

Financial Review

Summary Accounts for the year ended 31 August 2015 are shown on the next page.

We made a net surplus of £63,000 in the year, which compares with a surplus of £158,400 previously. This result reflects our investment in people, resources and facilities and was in line with our budgets for the year. We continued to benefit from the efficiencies of having one school campus in West London, but saw a higher operating loss at Faraday as we step-increased our space and bus transport provision.

In the coming year to 31 August 2016 we are budgeting for a surplus for Maple Walk, with a much reduced loss at Faraday; we continue to be excited about the prospects for Faraday, reflected in our ongoing growth plans for the school.

Operations**People:**

In September 2014 we added a new class to each school and we added two teachers to our complement to take on these responsibilities. We also added administrative staff at each school to cope with the growing child/parent populations and employed project resource centrally to help us manage expansion and change, particularly in technology.

Property:

In the Summer of 2014 we added another new classroom extension at the Maple Walk school site in Crownhill Road and provided new internal facilities for staff. These works were commissioned and overseen by the company but paid for by our landlord (The Craigmyle Charitable Trust) and the company's balance sheet reflects the recoverable amount in Debtors in 2014.

In the Summer of 2015 we installed a gallery library in the Maple Walk school hall and will shortly be adding a second pod for small break-out groups and individual tuition in the grounds, both of which were paid for by NMS.

At Faraday, we greatly increased our space with a new hall and open air playground space in the Summer of 2014. In 2015 more was spent to improve our site further. We also received funding via a Sports UK grant for a new playground, which was installed at Faraday during 2015.

Technology:

Having relied since our inception on open source systems, we oversaw the transition to a solely Microsoft environment in the year and in January 2015 appointed an external company to run a support-desk and help us manage procurement and training in this environment. We have with their help invested significantly in new hardware and software for teachers and children at both schools from September 2015.



The New Model School Company Limited
Profit and Loss Account - Year ended 31 August 2015

	2015 £	2014 £
Turnover	2,471,014	2,054,798
Cost of sales	(2,051,881)	(1,615,771)
Gross profit	419,133	439,027
Administrative expenses	(358,208)	(329,908)
Other operating income	-	46,004
Operating surplus	60,925	155,123
Interest receivable	2,276	3,550
Interest payable and similar charges	(250)	(250)
Surplus on ordinary activities before taxation	62,951	158,423
Tax on loss on ordinary activities	28,835	-
Surplus for the financial year	91,786	158,423

Balance Sheet as at 31 August 2015

	2015 £	2014 £
Fixed assets		
Tangible assets	206,252	171,736
Current assets		
Debtors	123,551	163,194
Cash at bank and in hand	1,342,247	1,030,907
Total	1,435,798	1,194,101
Creditors: amounts falling due within one year	(974,379)	(807,357)
Net current assets	491,419	386,744
Total assets less current liabilities	697,671	558,480
Creditors: amounts falling due after more than one year	(357,248)	(309,843)
Net assets	340,423	248,637
Capital and reserves		
Called up share capital	551,057	551,057
Profit and loss account	(210,634)	(302,420)
Shareholders' funds	340,423	248,637



*Secondary School
Places Offered
to Pupils Leaving
Year 6 of
Maple Walk School
(4 years of transfers)
and
Faraday School
(2 years of transfers)*

	TOTAL
Aldenham School	1
Arts Educational Schools	1
Belmont School, Mill Hill	1
Blackheath High School	1
Brandeston Hall, Suffolk	1
Brondebury College for Boys'	1
Channing School	1
Chiswick Community School	2
Christ's Hospital School, Horsham	1
Emanuel School	1
Francis Holland School (Regents Park)	15
French Lycee	1
German School, Richmond	1
Haberdashers' Monmouth School for Girls	1
Hampstead School	1
Godolphin & Latymer	3
The Grey Coat Hospital School	1
The Harrodian School	2
Highgate School	2
Ibstock Place School	2
Islamia Girls High School	1
Jewish Free School	1
The John Lyon School	8
Kew House School	2
Kingham Hall Oxfordshire	1
Lancing College	1
Latymer Upper School	1
Leweston Sherbourne	1
Lockers Park School, Hemel Hempstead	1
Marylebone Boys' School	4
Michaela Community School	1
Monkton Combe	1
More House	4
North Bridge House	15
Notting Hill & Ealing High School	6
Portland Place School	3
QPCS	5
Queen's College	15
Queen's Gate School	3
Radnor House	1
Rudolf Steiner School	1
South Hampstead High School	5
St Christopher School, Letchworth	3
St James Boys School	1
St James Girls School	11
St Marylebone C. of E School	4
St Pauls Girls' School	1
Upton Court (formerly Slough) Grammar School	1
Waldegrave Girls'	1
Wetherby	1
West London Free School	7
Wychwood School	1





A Report from Headteacher Susan Stark

Faraday School has continued to grow in the last academic year with nearly 100 children on roll in September 2015. In the past 12-months, the school site has been developed and refurbished, so that we now have a purpose-built playground, a new library in the former Music Room and an extended play room for the Reception children.

Looking back through our weekly newsletters, it is astounding how much we have managed to achieve in one year.

We continue to enjoy using the Core Knowledge curriculum; arranging a number of trips to bring our lessons to life and to give our pupils the opportunity to extend their knowledge of all things scientific, geographic, historic, musical and artistic. In the last year we have visited a wide range of venues, including The Geffrye Museum, London Transport Museum, The Royal Academy of Arts, The Greenwich Observatory, The Docklands Museum, Tate Modern, Kew Gardens, The Museum of Childhood and Hackney Farm, to name just a few. In essence, we are fortunate to be able to use London as a giant classroom.

We also participated in several fundraising events, and numerous interesting talks, including one on Forensic Science. We held two walking buses, a Bikers' Breakfast, a Christmas concert, two Music concerts, a Summer Play and Sports Day at Thames Barrier Park.

There was another successful art exhibition and competition, several themed days including a whole-school French Day, an Indian Day in Year 2, a Russian Day in Year 4, a Pirate Day in Reception and, to celebrate Miss Szyrocka's wedding, we learnt all about the traditions of Polish Weddings. Some of the pupils in Years 4, 5 and 6 went on their first residential trip with the pupils from Maple Walk.

This year Mr. Caunt made contact with local primary schools to play inter-school matches. Our teams put in a good effort during football matches at Bygrove and Britannia Village Schools, a hockey competition at Stebon School, where we came a very close second. Then in June we took part in a Mini Olympics at Barlett Park.

Our parent body, The Friends of Faraday, have continued to be of tremendous support to the school, organising a film night, a welcome barbecue for new parents, the annual Summer Fair and a Scholastic book fair, which enabled us to order 90 new books for our school library.

Finally, the school would be nothing without our tremendously dedicated and hard-working staff. We are very fortunate to attract staff of such high calibre and supported by them, I look forward to the coming year, confident that Faraday, in this amazing setting by the banks of the River Lea, will continue to go from strength to strength.

Location:
Trinity Buoy Wharf,
London E14

Opened:
September 2009

Number of children in
September 2015: 96

Head:
Miss Susan Stark





A Report from Headteacher Sarah Gillam

Another year has flown by and the success of the children is in the forefront of my mind. Children have left Maple Walk confident and successful, joining new schools with an excellent foundation. We were delighted with both academic and creative scholarships achieved by the pupils and this is due to the hard work from a dedicated staff team. I am strongly supported by an excellent senior leadership team and a newly appointed Deputy Head.

Core Knowledge is firmly embedded within the school and it is wonderful to observe lessons where the children are acting out important aspects of British or world history and really engaged in discussion and debate. The children's understanding of the geography of their locality and beyond is impressive. Class Assemblies have been full of information imparted in a dynamic and creative way. School visits to the huge wealth of cultural sites in London have extended the children's learning.

French Day has become an annual event and a theatre company visited to bring to life traditional fairy tales. Meanwhile, Year 6 went to the Institut Francais for a study day.

Maple Walk is well-known within the Independent Schools Association North for its contribution to sports, competing extremely successfully in athletics and cross country with many of our runners representing London North in the National Finals. Our football, netball, and tag rugby

teams also go from strength to strength. We have been fortunate to have had a wonderful Art Week and have created an Art Portfolio club for children who show high potential. In Music we now have two very strong choirs, a developing orchestra and a wide range of instrumental lessons.

The curriculum has been enhanced with a Mad Science Day and a Lego Day, which introduced the pupils to problem-solving activities and challenged their thinking. A visit from a writer and a poet ensured that the pupils' writing continues to develop and a drumming group from Bulgaria was inspirational.

We have welcomed a range of speakers to share their ideas and were particularly moved by the earthquake in Nepal, sending uniform and money to a Nepalese school. We also supported a local food bank and raised money for Children in Need.

Maple Walk continues to maintain its gold standard with Transport for London and we have held a number of initiatives including a bikers' breakfast and walk to school week.

The Friends of Maple Walk continues to thrive and provides the "extras" for our school community; supporting the early morning sporting activities, the huge range of school clubs and additional resources.

The academic year 2015-2016 is already upon us and with a new library area in place, wonderful new ICT equipment and a very strong staff team, I know that this is going to be an exciting year.

Location:
Harlesden, London NW10

Opened:
September 2004

Number of children in
September 2015: 205
with two forms per year
from Reception to Year 4
and one form per year from
Year 5 to Year 6

Head: Mrs Sarah Gillam



The People Behind NMS

Directors

David Jones, Chairman of NMS, is a partner of Oldfield Partners, having spent 26 years at UBS/Warburg, is a court member of the Fishmongers' Company, governor of Gresham's School, Trustee of National Volunteer Police Cadets, of National Crimebeat, High Sheriff of Greater London 2013-14 and a Deputy Lieutenant of Greater London. **NMS Committees: Advisory Board, Audit, Nomination (Chairman), Remuneration.**

Peter Meyer has been NMS Chief Executive Officer since 2013, after three years as Chief Financial Officer. He studied languages at University then qualified as an accountant and held positions at leading City institutions successively as Financial Controller, then Finance Director, spending 11 years at Schroders PLC. After leaving the City he owned and ran a property development company. **NMS Committees: Advisory Board, Audit, Nomination, Remuneration, Senior Management Team (SMT) (Chairman), Teaching and Learning (TLC).**

Simon Philips runs his own strategy and planning advisory business. He is a Trustee of Stoll, the Veterans' Housing charity and Director of WBC Training, a management training firm. Previous appointments include UK Marketing Director for the Grosvenor Group, Global Head of Communications and Marketing at UBS Investment Bank and various senior positions at The Economist Group. **NMS Committees: Advisory Board, Audit, Remuneration.**

Peter Wolton was CEO, NMS from 2009 to 2013. Past senior management positions include roles at Schroder Investment Management and Baring Asset Management. He is Assistant Curate, United Benefice of Holland Park and a director of Dunedin Income Growth Investment Trust plc. He sat on the Council of Queen Mary, University of London and was a trustee of Charities Aid Foundation. **NMS Committees: Advisory Board, Audit, Nomination, Remuneration, SMT, TLC.**



Head Teachers

Susan Stark joined Faraday School in June 2013. Previous to this, Susan worked as a Nursery School Proprietor, Head of Pre Prep at Aysgarth School, an Early Years Business Manager for CfBT (Centre for British Teachers) and as a Primary School Head Teacher in international schools from 2005 - 2012. Susan holds an MA in Primary Education and an MBA from Leeds University Business School. **NMS Committees: Advisory Board, SMT, TLC.**

Sarah Gillam joined Maple Walk in September 2012 having been a Head for seven years at a Preparatory School in Berkshire. The majority of her teaching experience has been within the independent sector and during her last headship the School achieved excellent grades in their inspection in 2011. She is an ISI Team Inspector working in independent preparatory schools. **NMS Committees: Advisory Board, SMT, TLC.**

Advisors

Jonathan Cubitt is Bursar of Queens Gate School. Previous roles include Business Development Director of Charity HR and Finance Director of The Art Fund - the national art charity - from 1998 to 2010. Prior to that, he spent 15 years in the accountancy profession working for several leading accountancy firms. **NMS Committees: Advisory Board, Audit (Chairman).**

Margaret Lenton was Principal of Slough Grammar School for 22 years, retiring in 2010. Mrs Lenton is Chairman of Wraysbury Parish Council as well as being a governor of a number of schools in Berkshire and a member of the East Berkshire Bench. She works with St George's House, Windsor Castle. **NMS Committees: Advisory Board, Remuneration, Teaching and Learning (Chairman).**

Justin Shaw was chairman of NMS from the company's foundation in 2004 until 2008. After reading Philosophy at Cambridge, he studied law and was called to the Bar at Lincoln's Inn. He is the author of two novels. **NMS Committees: Advisory Board, Teaching and Learning.**

Maureen Vivian joined the Advisory Board as one of the pioneering Maple Walk parents and her son was in our first Year 6 graduation. Her daily attachment to the school remains as her daughter is in her final year. Maureen offers a wealth of practical support to the school, head teacher and Friends of Maple Walk. Maureen is a highly regarded freelance fashion stylist. **NMS Committees: Advisory Board, TLC.**



Staff:

- 51 employees
- 12 specialist teachers
- 10 instrumental music teachers
- 10 volunteers
- 29 training courses (2014-15)

NMS Central Office:

Mamoona Ahmed
 Hilary Causer
 Emily Compston
 Dawn Knee
 Peter Meyer
 Peter Wolton

Faraday Staff:

Clare Adams
 Sarah Allgrove
 Ann-Marie Bennett
 John Caunt
 Ellie Davies
 Theo Frangos
 Chloe Franks
 Sarah Gimblett
 Luey Graves
 Marina Herring
 Louise Kavanagh
 Bonni Ramage
 Amanda Stapleton
 Susan Stark
 Tina Vinson
 Valerie Warde
 Chris Webb

Maple Walk Staff:

Connie Awit
 Dana Balmus
 Sarah Biasibetti
 Tiffany Brooksbank
 Lee Burian
 Gabrielle Dancey
 Bonyo Dimitrov
 Heather Eastland
 Jennifer Etienne
 Sarah Gillam
 Sonia Gomez
 Melissa Harrison
 Tempest Hepenstall-Brown
 Hannah Huish
 Friederike Lindner
 Andia Markou
 Nicola Martineau
 Sarah Militello
 Aoife Murphy
 Chantelle Nylander-Quartey
 Julie Partridge
 Jessica Reeves
 Hope Ritchie
 Francoise Romand
 Gill Sinclair
 Laura Thurlow
 Katingo Vati
 Michelle Ward



Friends of Faraday and Maple Walk Schools

The Friends of Faraday and Maple Walk continue to support the schools with a range of fundraising and practical initiatives. They bring a wealth of enthusiasm and commitment to enhancing the learning environment.

Maple Walk

In 2014-15 the Friends raised just over £18k and provided a wide variety of equipment, experiences, visiting specialists and pupil entertainment. They held a range of social events, including a horse racing evening and disco.

They also ran a barbecue at Sports' Day, sold tea towels, bags and Christmas cards and their annual Queens Park Fair stall was the most popular cake stand in the park.

Class reps also organised termly social events, which gave parents and carers, new and old, the opportunity to get together out of school. Their fundraising efforts kindly provided: art week, a skipping workshop, gym mats, ukuleles, a visiting poet, Year 6 leavers' books, gardening supplies, a drumming workshop, table tennis tables and bats, entry to sporting events and a meet the reindeer experience, to name just a few. The list would be too long to publish in its entirety. In 2014-15 Winkworth Estate Agent sponsored the Friends and have committed to doing so for the next academic year.

Faraday School

At Faraday School they are very fortunate to have an incredibly supportive parent body. The Friends of Faraday Committee is small but very active and provides a number of enjoyable social and fundraising events throughout the school year.

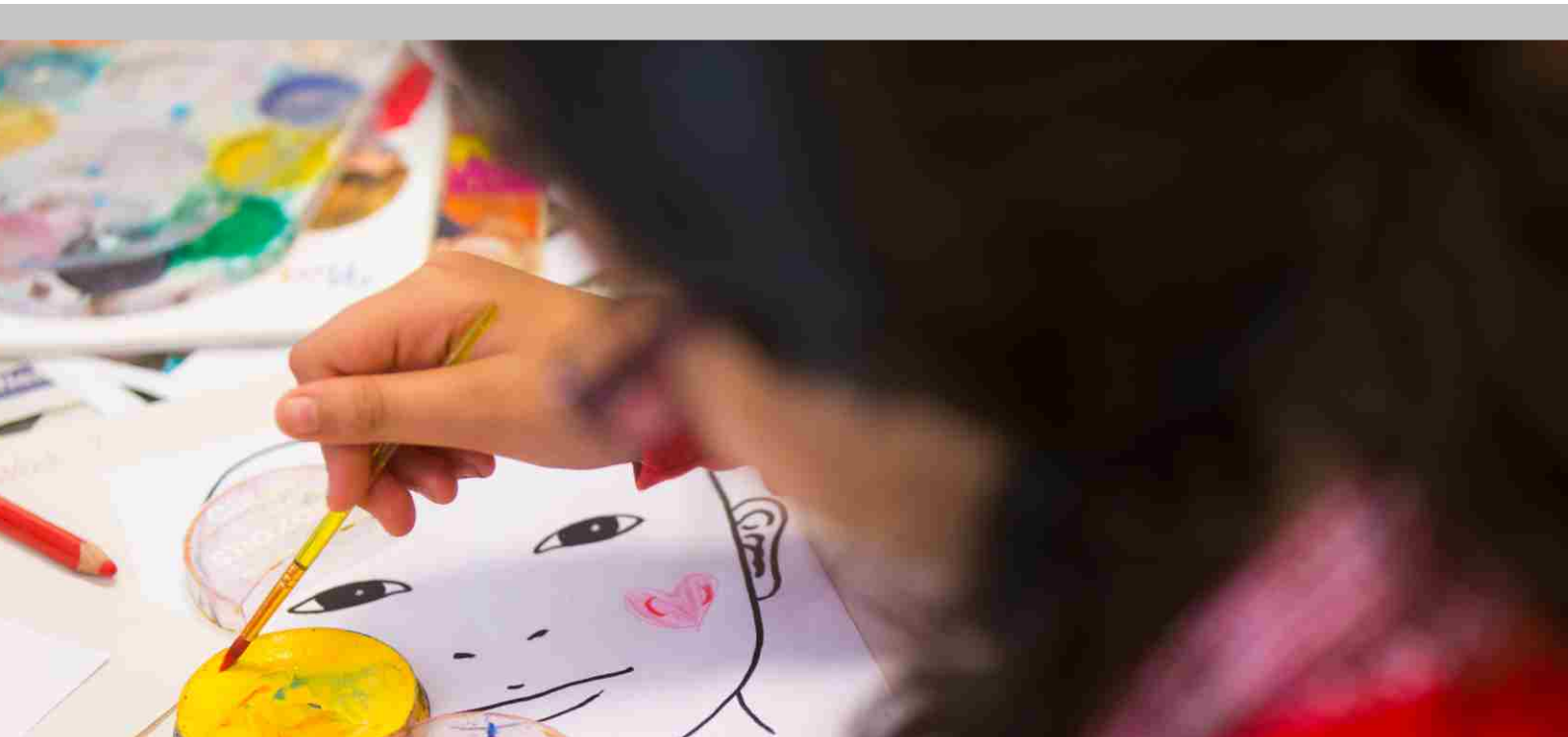
This year the Friends held a Welcome Barbecue for the incoming parents, followed by a film night for both parents and children. These events provide a good opportunity for parents to meet because so many Faraday children travel daily on the school minibuses.

The Parents also held four big fundraising events over the year – two very successful raffles, with amazing prizes donated by local companies an extremely successful Scholastic Book Fair and a Summer Fair.

The funds raised at these events have resulted in a large number of new resources, including a small modular stage, furniture for the Reception class home corner, additional Kindles and head phones and microscopes for use with the school desktops. The school was also delighted to receive story bags, which makes story telling for small children a magical experience.

Supporters

We are grateful for the support of:
The Craigmyle Charitable Trust,
The Fishmongers' Company,
Urban Space Management Limited
and Oldfield Partners.



NMS Vision and Values

Our vision

To make high-quality primary education available to as many children as possible

This means:

- Outstanding teaching of literacy and numeracy
- High expectations for each child's overall educational development
- Instilling habits of effective learning and good behaviour at an early age
- Academic standards that prepare pupils to perform to the best of their abilities in public examinations
- Using our not-for-profit status and tight cost management to re-invest surpluses and keep fees as low as possible
- Providing a demonstrable and replicable model for running schools

Our values

Our community

To be both nurturing and inspiring. Our values derive from a broadly Christian ethos, with obligations of courtesy, helpfulness and openness.

Our work


Excellence in education. Starting with strong foundations in literacy and numeracy, we aim to instil a love of learning in children through an inspiring curriculum covering the traditional subject areas.

Our goals

The acquisition by pupils of the skills, knowledge and habits of mind that will allow them to fulfil their potential and so grow towards maturity and self-confidence

Value for money, with a rigorous approach to efficient cost management





“Love MW, will be sad to leave. Such a caring, nurturing place for both of my kids. I love the community feel and the strength of the Friends group...”

Maple Walk parent.



New Model School
Unit 121 Buspace Studios
Conlan Street
London W10 5AP

020 8965 7374
www.newmodelschool.co.uk

New Model School Company Limited
Company No. 4892739 registered in England and Wales

Designed by Excelsior Graphic Designers. T:020 8385 2266